

The Del Hughes Awards

*for Lifetime Achievement
in the Art of Stage Management*

The Stage Managers' Association

**October 25, 2021
A Hybrid Celebration**

**Live from New York & Las Vegas
Virtually Everywhere**



Congratulations to
Arthur Lewis,
kindness personified!

Love,
Patti, Siona,
and your entire
extended family

Welcome

SMA

Welcome to the Del Hughes Awards. First, a big thank you to the members of the Awards and Recognition Committee, who, along with the SMA's Del Hughes Award Event Committee, have planned a great celebration for our honorees. Thank you to the board of directors. A special note of gratitude goes to Cheryl Mintz for chairing both committees and taking the reins on this multi-level, live and virtual event.

When the SMA was formed 39 years ago, stage managers from the New York theatre community came together in an effort to advocate and recognize our stage management profession. We started as a group small enough to sit around a table at a pub and now we are nearly 1200 members strong with representatives and members in nearly all 50 states and on six continents. Through our Regional and International cohorts we are able to build relationships with countries and national stage management organizations throughout the world. The Stage Managers' Association represents the best and the brightest, across the USA -- stage managers who, while pursuing our honorable profession, choose to support the work of the organization, striving for inclusion for all who work in our field. The SMA advocates for protection and continued development of those within our field, and to do this without regard to type of entertainment, union affiliation, or geographical location.

It has been my honor to helm this organization for the past seven years, in my final year as Chair, I assure you that there is much work left to be done. It is up to us, as members of the SMA to continue to work toward the continued development, recognition, and involvement of the American stage manager.

-- Elynmarie Kazle, *Chair,*
SMA 2014-2022

About the Stage Managers' Association

The SMA, whose inception is traced to 1981, is the only professional organization for working stage managers across the United States. Our mission is to recognize, advocate for, and provide continuing education and networking opportunities for stage managers across the USA.

The SMA strives for equity, fairness, diversity and inclusion. As stage managers we are discreet in our dealings with productions, producers and employers. We respect and value diverse life experiences and heritages, strive toward equitable treatment of our members, and support members who nurture diversity and equity in their places of work and in their broader communities.

Our NYC roots, networking and education remain an important part of the association today. SMA members, 1175 strong (as of this printing), are united for a common cause: to advocate for and recognize stage managers for the work we do in the entertainment profession.

We salute all of the 2021 honorees.

Charles Allen Blackwell
Ruth E. Kramer
Lynda A. Lavin
Arthur E. Lewis
101 Black Stage Managers
and R. Christopher Maxwell

Thank you for blazing a trail of excellence for us all to follow.

-- Elynmarie Kazle, chair of the SMA
& Adrienne Wells, chair-elect of the SMA

*One of the tests of a good
stage manager is the
ability to recognize a
problem before it
becomes an
emergency.*



The Del Hughes Award

—SMA—

The Del Hughes Award for Lifetime Achievement in the Art of Stage Management is presented by The Stage Managers' Association. The Del Hughes honor is awarded to those who represent the finest qualities and artistic achievement in stage management throughout their lifelong career.

Del Hughes (1909-1985) was an American theater performer, stage manager, and television director. Prior to establishing his career as a stage manager, Hughes performed in several Broadway productions, including *Vickie* (1942), *Yours*, *A. Lincoln* (1942) and *Open House* (1947). Hughes managed dozens of Broadway productions, including the premiere of Arthur Miller's *Death of a Salesman* in 1949 at the Morosco Theater, as well as works by Lillian Hellman and Graham Greene. In the late 1960s and early 1970s, Hughes directed episodes of the television dramas "One Life to Live" and "All My Children." The Del Hughes prompt books, archived in the Billy Rose Collection at the New York Public Library at Lincoln Center, date from 1943 to 1968 and represent twenty-four Broadway productions.

Upon his passing in 1985, his daughter, Julie Hughes, created a legacy for her father with the Stage Managers' Association -- the Del Hughes Lifetime Achievement Award in the Art of Stage Management. In 1986, the first award was presented to Phil Friedman.

Previous Del Hughes Honorees

1986	Phil Friedman	2014	Tom Kelly
1987	Anne Sullivan		Martha Knight
1988	Fritz Holt		Jimmie McDermott
1989	Bill Dodds	2015	Frank Hartenstein
1990	Ruth Mitchell		Craig Jacobs
1991	Samuel "Biff" Liff		Jill Rendall
1992	Morty Halpern	2016	David Piel
1993	Jerry Adler		John Fennessy
1995	Jose Vega	2017	Buzz Cohen
1999	Anne Keefe		Malcolm Ewen
2010	Susie Cordon		Arturo E. Porazzi
	Alan Hall	2018	Maxine Glorsky
	Porter Van Zandt		Lyle Raper
2011	Joseph Drummond		Roy Harris
	Beverley Randolph	2019	Rich Costabile
	Steve Zweigbaum		Barbara Donner
2013	Bob Bennett		Mary K Klinger
	Peter Lawrence	2020	Patreshettarlina Adams
	Perry Silvey		Alden J. Vazquez

Congratulations

**We offer our sincere admiration to the
2021 Del Hughes Award Honorees
for Lifetime Achievement
in the Art of Stage Management**

**Ruth E. Kramer, Lynda A. Lavin, Arthur E. Lewis,
and posthumously Charles Allen Blackwell
&**

**Special Recognition extended to the
101 Black Stage Managers Campaign**

The Del Hughes Awards

We welcome you to an elite group of standard bearers

*Your achievements will shine
a light for future stage managers to follow.*

**From the 2020 Honorees:
Patreshettarlini Adams, Alden J. Vasquez,
and Robert Sutherland-Cohen**

Program

SMA

Welcome

**Cheryl Mintz and
Patreshettarlini Adams**

Opening Remarks

Elynmarie Kazle

Chair of the Stage Managers' Association

celebrating Del Hughes honoree

Charles Allen Blackwell

accepted by his son **David Blackwell**

Ted Pappas

to introduce Del Hughes honoree

Ruth E. Kramer

Ron Guarnieri

to introduce Del Hughes honoree

Lynda A. Lavin

Jeffry Gitter

to introduce Del Hughes honoree

Arthur E. Lewis

**Carmelita Becnel, Guest Speaker
101 Black Stage Managers Campaign**

special recognition award

curated by **R. Christopher Maxwell**

Closing Remarks

Cheryl Mintz and Patreshettarlini Adams

Del Hughes Award Event Committee

Cheryl Mintz, Chair

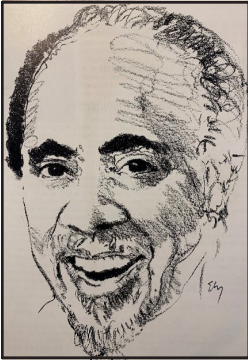
Patreshettarlini Adams, John Concannon, Alison Cote, Josh Diamond, Victoria Frank, Bill Hare, Elynmarie Kazle, Hope Rose Kelly, Robert Mills, Amy Paige, Norah Scheinman, Sam Shapiro, Marci Skolnick, Erik Smith, Matt Stern, Robert Sutherland-Cohen, Helen Thornton, Joel Veenstra, Adrienne Wells, and Mark A. Zimmerman

Original Music Composed by

Ethan Korvne

Del Hughes Honoree Bios

—SMA—



CHARLES ALLEN BLACKWELL is being honored posthumously for his long and distinguished career as a Broadway Stage Manager which included 18 years as David Merrick's lead stage manager. With over 25 productions to Charlie's credit, highlights included *Promises, Promises*, *Sugar*, *The Wiz*, *Nine*, *Chapter Two*, *Sunday in the Park With George*, *Those Were The Days*, *Biloxi Blues*, *The Corn is Green*, *Duet for One*, *Don't Play Us Cheap*, *The Seven Descents of Myrtle*, *How Now, Dow Jones*, *Rosencrantz and Guildenstern Are Dead*, *Breakfast at Tiffany's*, *110 in the Shade*, *Rattle of a Simple*

Man, *Carnival!*, *Take Me Along*, *Jamaica*, *Fanny*, and *Jerome Robbins' Broadway*. He received a Tony nomination as author of the book that became the basis for the musical *The Tap Dance Kid*, wrote the screenplay for *A Piece of the Action*, directed *The Poison Tree*, and produced *Ain't Supposed to Die a Natural Death*, both on Broadway.

Early in Charlie's career, after attending Oberlin College, he toured Europe, Africa, and Israel with the Pearl Primus School of African Dance. He had a short career in business, returned to the theater as a solo dancer in *Fanny* and then moved into stage management.

Charlie died at age 66 in 1994. He met his wife Frances Blackwell as dancers with the Pearl Primus Dance Company, and Charlie traveled the world to follow her. Following her dance career, Frances was a travel liaison with foreign countries to cultivate American tourism. Charlie and Frances had a daughter Lisa. They are remembered by their son David, and granddaughter Sarah. Accepting the award on Charlie's behalf is his son, accomplished production stage manager, David Blackwell.

RUTH E. KRAMER is originally from Detroit where her favorite class in elementary school was called "Auditorium" and she wanted nothing more than to be onstage. Fast forward to Michigan State University where she learned of this mysterious position entitled "Stage Manager" and there was no going back. After working as an actor for the Rosier Players Old Time Tent Show and an ASM at the Tibbits Opera House over summers during college, and meeting professionals from "New York," she knew she'd found a home in the theatre.



Del Hughes Honoree Bios

—SMA—

She headed to NYC, now her home of 42 years, where she was first employed as an answering service operator, but soon landed a multi-year stage managing gig with the acclaimed dance troupe PILOBOLUS, touring nationally and internationally, as well as a Broadway season at the then-named ANTA Theatre. That was followed by an Equity card and several Off-Broadway productions, and many years of exploring new locales while touring with TheatreWorks USA, and ultimately directing 13 tours.

Forging an ongoing freelance career in regional theatre and discovering that great talent and love for the stage exist everywhere, Ruth is most proud of her 20 year/40 production relationship with the Pittsburgh Public Theater, led by Artistic Director Ted Pappas. Among her other credits are Alpine Theatre Project, Alabama Shakespeare Festival, Riverside Theatre, Maine State Music Theatre, Florida Repertory Theatre, Shakespeare Theatre Company, Goodspeed-at-Chester, Arkansas Repertory Theatre, and Great Lakes Theater Festival.

Ruth is a 38-year member of Equity and has served on the National Council for the past 17 years. She is a fierce advocate for, and mentor to her fellow Stage Managers as she continues to evolve, make unexpected friendships in distant places, and to cherish with pride the inspiring SM community that has sprung to life in the past 18 months.



LYNDA A. LAVIN has been a member of Actors Equity for 43 years. She began her career working Equity Waver theaters in San Francisco and Los Angeles, before moving into the world of Touring. She was hired in 1978 as an Assistant Stage Manager on a National Tours of Annie, thus beginning a long, loving and memorable life on the road.

Other long run tours over the many years have included *Cats*, *Les Misérables*, *Phantom of the Opera*, *Grease*, *Chicago*, *Blast*, *Mama Mia*, *Thoroughly Modern Millie*, and *Jersey Boys*. There were several other short-lived tours that died early and have been put to rest, never to be mentioned again. After years of touring big musicals, she worked as the Resident Director for the Arena Tours, *Walking with Dinosaurs* and *How to Train Your Dragon*.

Del Hughes Honoree Bios

—SMA—

Lynda is grateful to have worked with so many gifted Actors, Directors, Choreographers, Performers, Designers, Stagehands, General Managers, Company Managers and most importantly to have been taught by many hard working and dedicated Stage Managers who paved the way for her. She has crisscrossed the US, Canada, Mexico, Japan, Australia, New Zealand and Dubai, and built up over a million miles of travel.

Along the way she was proud to work on several Equity Committees, worked to improved touring conditions, and help develop the Las Vegas Liaison Committee and the Casino Contract.

After 41 years in the business, Lynda has hung up her headset. She has retired and is living in Las Vegas, where she supports her local theaters, by being an avid theater goer. There's nothing like live theater.

Lynda is honored that she is sharing this award with the great Charlie Blackwell, who inspired her during the early days of her career. Tonight, she says thank you to the Stage Managers Association, Actors Equity Association, and she raises a glass to Charlie.



ARTHUR E. LEWIS is astounded to find his name added to the distinguished roster of Del Hughes honorees. It is a delightful surprise and a great honor.

Arthur has worked in television, theatre, and live event production for over 35 years. His television career has included stage managing The Oscars, The Tonys, The Golden Globes, The Grammys, The Kennedy Center Honors, Super Bowl Halftime, Olympic Games Opening Ceremonies, and “Saturday Night Live.” Lewis was also a First AD on the 2018 season of “Murphy Brown” and the sitcom, “Are We There Yet?”

Corporate event clients have included Google, Apple, YouTube and Lexus. Off-Broadway he has been production stage manager for Ta-Nahesi Coates’ Between the World & Me at the Apollo Theater and Eve Ensler’s “The Vagina Monologues.” He has also toured internationally with theatrical productions of avant garde visionary Robert Wilson and composer/director Phillip Glass.

Del Hughes Honoree Bios

—SMA—

Attending Lafayette College, Arthur intended to earn an engineering degree to ensure future employment. He recalls, “My freshman year internship with an engineering firm was not a good fit. I knew I would have to work for a living and I wanted the work to be something I’d enjoy. I enjoyed helping tell stories. I graduated an English major and became a page at NBC where I met Fred Lights. Lights was one of the first African-American stage managers at NBC. A graduate of the Yale School of Drama, he stage managed “Nightly News with Tom Brokaw.” When he began his work at NBC, he was ostracized by white co-workers, often getting the silent treatment, sometimes worse. By 1984, when we met, he was a respected, beloved member of NBC production. He suggested NBC management give me a chance and I became a stage manager at the network.”

The opportunity to stage manage President Obama is Arthur’s proudest professional achievement. Arthur’s involvement with President Obama began at the historic 2008 Democratic National Convention where he was nominated as the presidential candidate. It continued through both of his inaugurations and included the “In Performance at the White House” series for several episodes.

Always happy to mentor, Arthur has been a guest lecturer on his craft at Columbia University, New York University, Hofstra University, Emerson College, Long Island University, and the University of Texas at Austin.

Arthur lives in Brooklyn with his darling daughter, Siona, and wonderful wife, Patti.

**Congratulations to the Del Hughes Honorees
and the 101 Black Stage Managers Celebration**

princetonVIRTUAL

Alison Cote — Perry Jones — Seth Mellman — Cheryl Mintz


Broadway & Beyond

Access for Stage Managers of Color

Broadway & Beyond: Access for Stage Managers of Color is a networking organization that aims to connect early and mid-career stage managers of color with industry professionals. Founded by veteran stage managers Lisa Dawn Cave, Beverly Jenkins, and Jimmie Lee Smith, Broadway & Beyond provides opportunities to aspiring and current stage managers of color to learn from industry insiders and meet industry leaders, and provides insights to help stage managers of color start, maintain, and advance a career in the arts and theatre through free networking and educational events. Since its inaugural event in December 2020, Broadway & Beyond has created connections that have led to dozens of job offers for stage managers of color at theatres across the country.

FOR MORE INFORMATION AND TO EXPLORE

Broadway and Beyond's database of stage managers of color, visit BroadwayBeyondAccess.com.

Follow us  

Special Recognition Award

—SMA—



With a Special Recognition Award, the SMA is honoring the 101 Black Stage Managers celebration curated by R. Christopher Maxwell in conjunction with the SMA and the Black Theatre Caucus.

The campaign's goal is to raise the visibility of our community of excellent Black Stage Managers nationwide. The SMA is offering each of these stage managers two years of professional access as part of our commitment for big change in the SMA. By actively welcoming these voices into our professional association, we will gain new opportunities to learn, to make change, and find our way to a more equitable Stage Managers' Association for all.



Patreshettarlini
Adams



Narda E.
Alcorn



Theron
Alexander



Elis C.
Arroyo



Nakia Shalice
Avila



Jamel
Baker



Carmelita
Becnel



Jhanae Kadie-
Chantal Bonnick



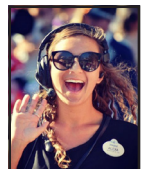
Tyler P.
Britt



Kiara
Brown



Beonica
Bullard-Eaden



Alexa
Burn

Special Recognition Award

—SMA—



Stephanie
Cathey



Lisa Dawn
Cave



Tesia
Childs



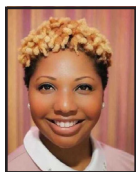
Giselle
Clarke-Trenaman



Alexis E.
Davis



Lloyd
Davis, Jr.



Arianna
Day



Ed
De Shae



Egypt
Dixon



Jessica
Emmanus



Avery James
Evans



Chelsea Olivia
Friday



Tia Harewood-
Millington



Kimi
Harvey-Scott



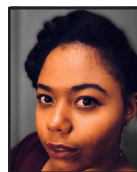
Jordyne
Hebron



Nikki
Hyde



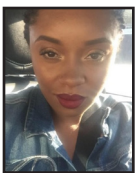
Brandon A.
Jackson



Kristina
Jackson



Ross
Jackson



Kamra
Jacobs



Beverly
Jenkins



W. Wilson
Jones



Katie
Kennedy



TaiReikca
L.A.



Stormy Weather
Lambert



Sheldon P.
Lane



Ralph Stan
Lee



Jereme Kyle
Lewis



Clarissa Marie
Ligon



R. Christopher
Maxwell



Joan Foster
McCarty



Kenneth J.
McGee



Lexi
McKay



Caren Celine
Morris



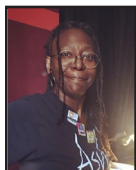
Alex
Murphy



Aldora
Neal

Special Recognition Award

SMA



Pam Noles



Ashley Oliver



Edmund O'Neal



Cara Parrish



Shaina Pierce



Brilliant Qi-Bell



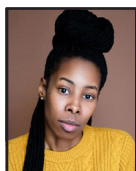
Mandisa
Reed



Cody Renard
Richard



Bernita
Robinson



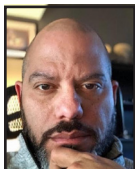
Tiffany N.
Robinson



Meagon
Roe



Ashani
Smith



David 'dstew'
Stewart



Shantez
Tolbut



Victoria
Whooper



Rickelle
Williams

Awards and Recognition Committee

Cheryl Mintz, Chair

Patreshettarlina Adams, Bob Bennett, Joseph Drummond, Bill Hare, Ross Jackson, Jimmie McDermott, Melissa A. Nathan, Robin Rumpf, Matt Stern, and Alden J. Vasquez

The Founders and Special Awards

Robert I. Sutherland-Cohen, *Founders Award* (2020)

Janet Friedman, *Founders Award* (2019)

Peter Sargent, *Special Recognition, Education* (2018)

Jane E. Neufeld, *Special Recognition* (2016)

Peter Wolf, *Special Recognition* (2015)

Sherry Cohen, *Special Recognition* (2015)

BRAVO TO ALL OF TONIGHT'S HONOREES!



Kate Shindle
President

Mary McColl
Executive Director

We join you in honoring the
2021 Del Hughes Award recipients
Charles Allen Blackwell,
Ruth E. Kramer, Lynda A. Lavin, and
Arthur Lewis as well as the
101 Black Stage Managers Campaign
on receiving a
Special Recognition Award!

**Congratulations to the 2021 recipients of the Del Hughes Award
for Lifetime Achievement in the Art of Stage Management,**

**Charles Allen Blackwell, Ruth E. Kramer, Lynda A. Lavin, & Arthur Lewis,
And the special recognition of 101 Black Stage Managers.**

BROADWAY STAGE MANAGEMENT SYMPOSIUM

**It's a joy and an honor to celebrate these incredible stage managers and
salute their contributions to our profession and our industry.**

The Broadway Stage Management Symposium is an annual conference for stage managers where Broadway's best share their experience & expertise with stage managers from around the world, giving insights, information, & inspiration as you connect, learn, and grow. More info and join the mailing list at: www.broadwaysymposium.com

Congratulations to the
Del Hughes Honorees
and special recognition to the
101 Black Stage Managers' Celebration

Read the reports starting from 2006.

Share today's experiences.

October 10-31

www.smsurvey.info

○ STAGE

○ MANAGER

◎ SURVEY

Regional Representatives

*Working in tandem with our elected National Regional Board Directors,
these individuals work to build community hosting events, seminars
and gatherings in their home states,
cities and regions across the country*

Rusty Cloyes, Regional Rep Western: Dallas/Texas

Erin Joy Swank, Regional Rep Western: Colorado

Nikki Heskin, Regional Rep Western: Greater Los Angeles

Marci Skolnik, Regional Rep Western: Las Vegas

Lora Powell, Vice Regional Rep Western: San Diego, CA

Jacqueline Saldana, Regional Rep Central: Chicago

Veronica Zahn, Regional Rep Central: Milwaukee: WI

Sarah Acker, Regional Rep Central: Milwaukee: WI

Amy Paige, Regional Rep Central: St. Louis: MO

Megan Cahill, Regional Rep Central: St. Louis: MO

Victoria Frank, Regional Rep Central: Kansas City: MO

Katherine Nelson, Regional Rep Central: Detroit, MI

Mandlyn Stevens, Regional Rep Central: Northeast Ohio

R Christopher Maxwell, Regional Rep: New York Metro

Sadie DiSantis, Regional Rep Eastern: Carolinas

Fisher Brawner, Regional Rep Eastern: Georgia

Theresa Driver, Regional Rep Eastern, Tennessee

Claudia Lynch, Eastern: Central Florida

Jeremy Anderson-Ward, Regional Rep: Eastern New England, Western New York

Alexis “Lexi” McKay, Regional Rep Eastern: Greater Atlanta

**to nominate a candidate for Regional Rep in your area
please visit the website/members only access**

The Council for Equity and Advocacy

The Council was established in 2020 to advocate for and champion all stage managers. The CEA's primary charge is to monitor and guide the SMA in regards to expanding and increasing representation in membership, specifically highlighting and elevating members who are Black, Indigenous, and People of Color (BIPOC), and other marginalized identities, as well as to provide advice on resources and educational services which can be developed to support this growth within the Association.

Members of the Council

Alfredo Aguiar, Johnathan Castanien, Miguel Flores, Sarah Goshman,
Ross Jackson, Kamra Jacobs, R. Christopher Maxwell,
Kat Meister, Joanne Pan, Cheri B. Tay,
*Elynmarie Kazle, Katrina Herrmann,
Amanda Spooner, Adrienne Wells (Ex-Officio)*

Congratulations

Ruth E. Kramer

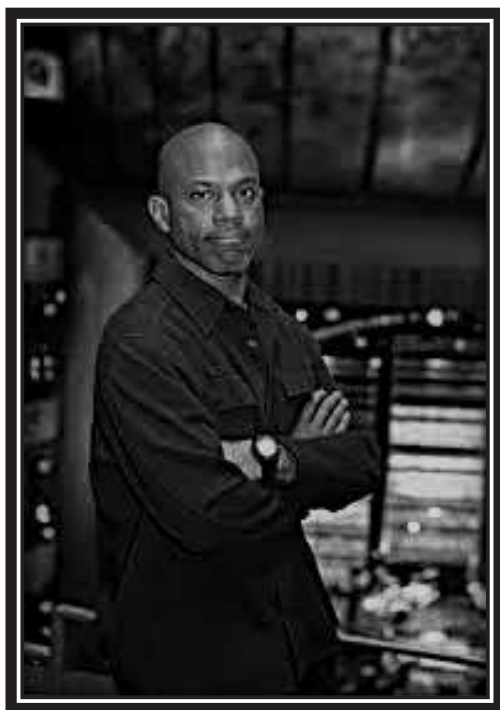
for this well deserved honor.

You set the standard at
Pittsburgh Public Theater
and we are grateful for you!

Your friends at



Dear
Arthur Edward Lewis,
"MY MAN"!



YOU...
HAVE MADE YOUR
MARK!

With nothing but love,
Jeffry Gitter
Phyllis Digilio, Peter Epstein, Doug Fogal,
Tyler Goldman, Jeff Markowitz, Gary Natoli,
Karen Tasch Weiss



The Board of Directors

Officers

Chair, **Elynmarie Kazle**

Vice Chair, **Ross Jackson**

Treasurer, **Amy Paige**

Corresponding Secretary, **Casey Hagwood**

Recording Secretary, **Allison Baker**

Chair Elect: **Adrienne Wells**

Director of Education: **Amanda Spooner**

Editor in Chief: **Hope Rose Kelly**

Directors at Large

Alfredo Agular

Katrina Herrmann

R. Christopher Maxwell

David J. McGraw

Cheryl Mintz

Matthew Aaron Stern

Regional Directors

Maegan Burnell, Central

Rachel Harrison, Eastern

Jhanaë Bonnick/Rachel Zucker,

Co Directors New York Metro

Talia Krispel/Ben Shipley,

Co Directors Western

Past Chairs

First, Jon Goldman

Chair Emeritus, Rich Costabile

The Mission of the Stage Managers' Association

Advocate

Educate

Recognize

Mentor

Create Community

established 1982



**USITT is proud to salute this
year's Del Hughes Award
recipients.**



**62nd Annual Conference & Stage Expo
March 2-5, 2022
Baltimore
www.usitt.org**

usitt

International Cohort of the Stage Managers Association

This cohort of Ambassadors brings international stage management resources to the SMA as well as work together to build the worldwide stage manager community

Ada Zhang
Ambassador, China

Kate Middleton-Olliver
Ambassador-Australia & New Zealand

Amrita Puri
Ambassador, United Kingdom

Keyur Shah
Ambassador, India

Andy Rowley
Ambassador, United Kingdom

Lucie Everett-Brown
Ambassador, New Zealand

Anna Robb
Ambassador, Hong Kong

Madison Burkett
Ambassador, Australia

Brandon Li
Ambassador, China

Maria de la Paz Zavaleta
Ambassador, Mexico and Argentina

Daniella Tatto
Ambassador, Germany

Nagla Essam
Ambassador, United Arab Emirates

Darren Kowacki
Ambassador, Australia

María Davilá
Ambassador, Spain

David McGraw
Ambassador, USA

Bree DeSouza
Ambassador, Malaysia

Dian Harcovecchio
Ambassador, South Africa

Robert Mills
Ambassador, Dubai

Emiliano Caffarelli
Ambassador, Argentina

Ronel Jordaan
Ambassador, South Africa

Emily Louise Palmer
Ambassador, United Kingdom

Elynmarie Kazle
Ambassador, USA

Laia Machado
Ambassador, Spain

Julia Reid
Ambassador, United Kingdom

Jon Allen
Ambassador, USA

Kat Chin
Ambassador, Canada

Congratulations from SETC to the Winners of The Stage Managers' Association's 2021 Del Hughes Lifetime Achievement Awards!

SETC Serves as a Resource for the Theatre Industry

- > The Southeastern Theatre Conference (SETC)
2022 Convention March 9-13 in Memphis In-Person Event
Registration is Now Open! convention.setc.org**

Whether you are a professional or an emerging artist, we are here to help you grow your career and connect you with the theatre industry!

4,500 theatre enthusiasts, 240+ workshops, 5 Theatre Festivals and dozens of performances. Distinguished keynote speakers as well as hundreds of auditions & interviews for graduate, undergraduate and professional openings. A full exhibit hall with commercial and educational vendors, and our Job Fair, highlight the available opportunities.

- > LiNK- Where Master's Candidates & Recruiters Connect
December 1-3, 2021 | Virtual Event | SETC & USITT Partnership
Registration is Now Open! setc.org/auditions/link**



Connecting You to Opportunities in Theatre Nationwide

Tools for all Stages of your Career

—SMA—

JOB POSTINGS: Hundreds of the latest job opportunities delivered directly to our membership and posted on the website. Employers post free of charge.

STANDING IN THE DARK®: A series of 25 audio and video conversations with prominent stage managers: on their career, family and working on Broadway, on tours and regionally.

SMA BOOKSHELF: Find books recommended by fellow members of the SMA which include textbooks, financial literacy, career advice and more. Over 51 volumes on five shelves. Potentially coming soon, list of pro stage managers available for interviews.

ASK A STAGE MANAGER: free to all, get information you can count on by posting a questions to the professional stage managers of the SMA

GUEST ARTIST/PRO STAGE MANAGER INDEX: A program for Associate Teaching members who can find a professionals to be a resource for their collegiate theatre program. All collegiate programs need stage managers, and this resource is for the school who may not have the resources for a full stage management program.

VIEW FROM THE WINGS / WEBINARS / LECTURES SERIES / SPEED CHATTING: Online and in person symposia and conferences that cover hot topics, with prominent industry experts on topics of interest to stage managers.

NATIONAL RECOGNITION: The SMA honors professional stage managers annually with the Del Hughes Award for Lifetime Achievement in the Art of Stage Management, the Founders Award as well as other national honors.

MENTORING/SUPPORT: for members at all levels of their career. Get advice you need from seasoned professionals, farther along the path, in any area of entertainment management. Seasoned pros *give back* to the industry.

WEBSITE: Find out what's going on in the world of Stage Management, or how that new gizmo is being used by other SMs. Over 200 links to articles on Stage Management, "how to" recordings, document library and interviews; are all a part of our website library.

SM GO/COMMUNITY: Let the Stage Managers' Association provide support for a project or your next get together of local Stage Managers, no matter where in the country. Stage Manager Touring Panels, Pizza Parties, holiday gatherings of SMs... what would bring stage managers together in your community?

Standing in the Dark

—SMA—

Under the leadership of Elynmarie Kazle and initiated by Rachel Zucker, the Stage Managers' Association began to record interviews of career stage managers through two series, *Women of Broadway* (interviewed by Amanda Berry) and *The Legacy Project*, under the banner of *Standing in the Dark*. These recordings are made available to the public on a rotating basis via our website at stagemanagers.org. For access to the full library which is continually updated through the work of the Stage Manager History Committee. SMA members must sign in at stagemanagers.org to listen to the entire series.

Recordings currently available

Mary Beth Abel	Mary K Klinger
Jerry Adler	James Latus
Perry Cline	Valerie Lau-Kee Lai
Buzz Cohen	Peter Lawrence
Robert I. Cohen	James T. McDermott
Jill Cordle	Ira Mont
Heather Cousens	Karen Moore
Joseph Drummond	Bonnie Panson
Malcolm Ewen	Michael Passaro
Keith Fort	Lyle Raper
Bess Marie Glorioso	Charlene Speyerer
Cindy Kearns	Peter Von Mayrhauser
Amber White	

Thanks to the committee/interviewers for the ongoing work to preserve the voices of career stage managers: Elynmarie Kazle, (*the Legacy Project*), Mandy Berry, (*Women of Broadway*) Hope Rose Kelly, Editor SMA Website and Nancy Ann Adler, Bob Bennett, Andrew Feigin, Janet Friedman, Patricia Sutherland Cohen, William T. Jones, Els Collins, Joseph Drummond, David McGraw, Judy Martel, Marguerite Price, Evelyn Plummer, John Saluz (podcast editor), Matthew Stern, and Rachel Zucker.

To nominate a stage manager for inclusion in either series, please go to stagemanagers.org/Iwantto/nominate.

CONGRATULATIONS

2021 Del Hughes Award
for Lifetime Achievement recipient

LYNDA A. LAVIN



Walking with Dinosaurs – The Arena Spectacular
Resident Director and Production Stage Manager

How To Train Your Dragon – Live Spectacular
Resident Director



Producers of original productions including
Moulin Rouge! The Musical

global-creatures.com



Stage managers are the heart, soul and muscle
behind the generosity of spirit that drives all we do.

We celebrate and thank all stage managers
and salute the members of the

Stage Managers' Association.

Congratulations to tonight's honorees.

Ruth E. Kramer,
Lynda A. Lavin, Arthur Lewis
and, posthumously,
Charles Allen Blackwell
The Del Hughes Award

And to the celebration of
101 Black Stage Managers
Special Recognition Award

We honor their dedication and commitment
to the work of being a stage manager.

broadwaycares.org

What we do together makes a difference